

## XLIII.

### Kleinere Mitteilungen.

---

#### Der 28. Deutsche Kongress für Innere Medizin

findet vom 19. bis 22. April 1911 in Wiesbaden statt unter dem Präsidium des Herrn Krehl (Heidelberg). Das Referatthema, welches am ersten Sitzungstage: Mittwoch, den 19. April 1911 zur Verhandlung kommt, ist: Ueber Wesen und Behandlung der Diathesen. Referenten sind die Herren: His (Berlin): Geschichtliches und Diathesen in der inneren Medizin. Pfaundler (München): Diathesen in der Kinderheilkunde. Bloch (Basel): Diathesen in der Dermatologie.

Vortragsanmeldungen nimmt der Sekretär des Kongresses, Geheimrat Dr. Emil Pfeiffer, Wiesbaden, Parkstrasse 13, entgegen zur Weitergabe an den Vorsitzenden. Vorträge, deren wesentlicher Inhalt bereits veröffentlicht ist, dürfen nicht zugelassen werden.

Nach § 2 der Geschäftsordnung sind die Themata der Vorträge mit kurzer Inhaltsangabe bis 4 Wochen vor Beginn der Tagung einzureichen, d. h. für diese Tagung bis zum 22. März 1911. Später angemeldete Vorträge haben keinen Anspruch auf Berücksichtigung.

Mit dem Kongresse ist eine Ausstellung von Präparaten, Apparaten und Instrumenten, soweit sie für die innere Medizin von Interesse sind, verbunden. Anmeldungen zur Ausstellung sind ebenfalls an den Sekretär zu richten.

Im Auftrage:

Emil Pfeiffer,

Sekretär des Kongresses.

(Wiesbaden, Parkstrasse 13.)

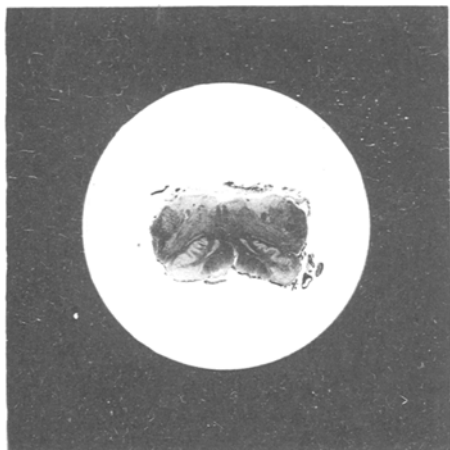


Fig. 1

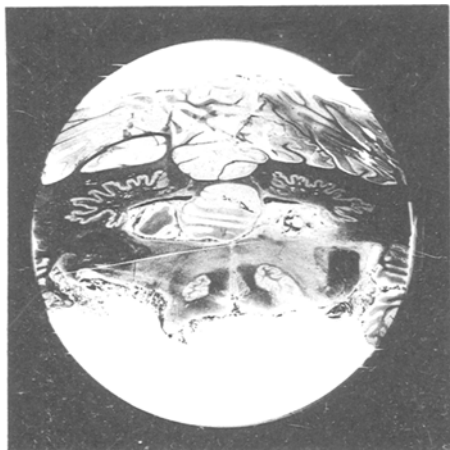


Fig. 2

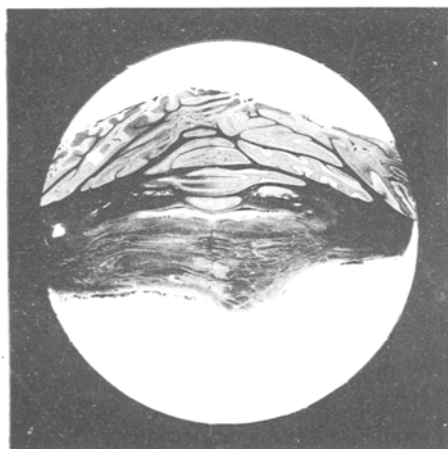


Fig. 3

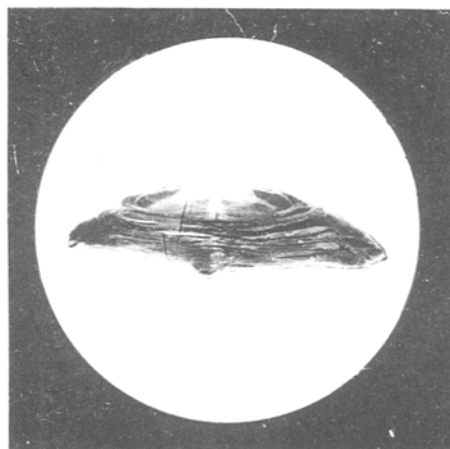


Fig. 4

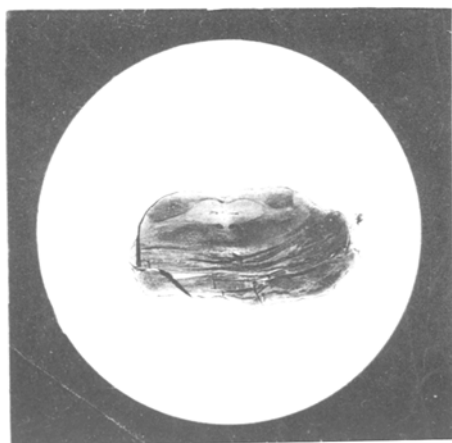


Fig. 5

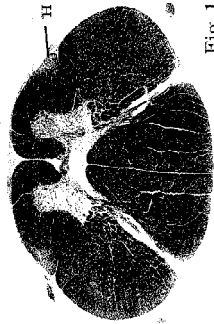


Fig. 1



Fig. 2

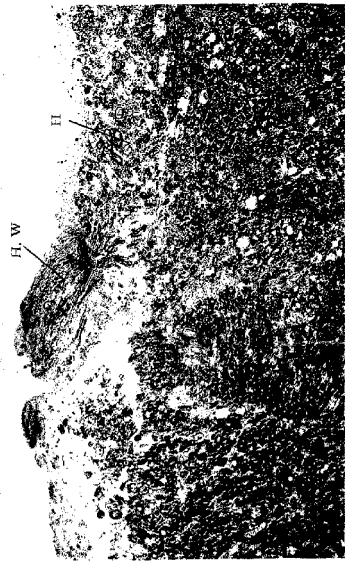


Fig. 3

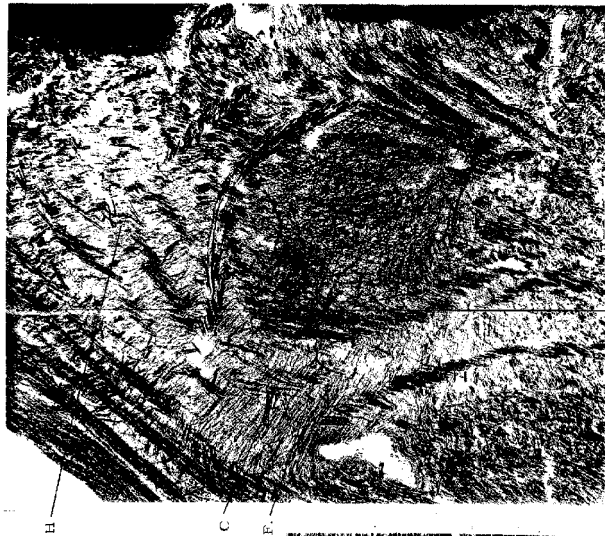


Fig. 4



Fig. 5

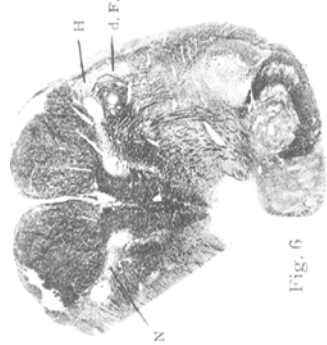


Fig. 6



Fig. 7



Fig. 8

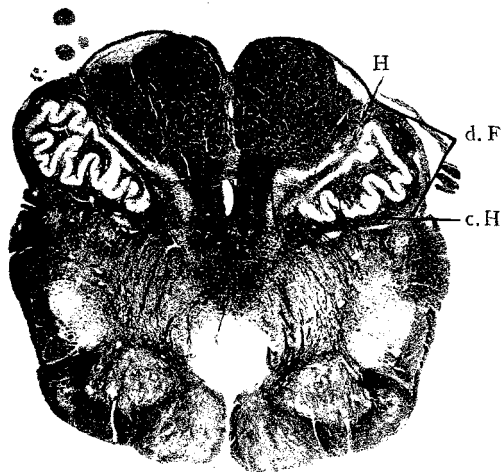


Fig. 9

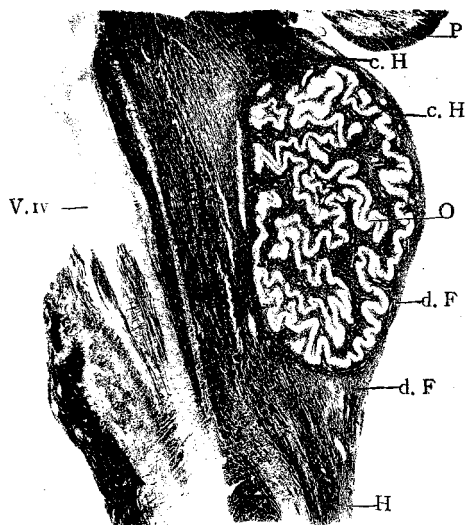


Fig. 10

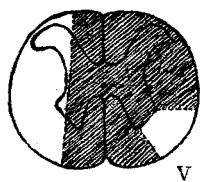


Fig. 11



Fig. 12

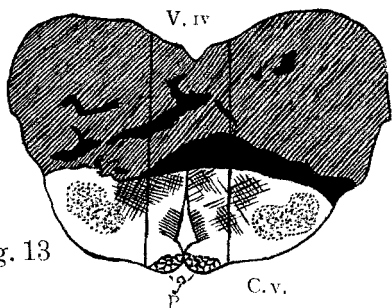


Fig. 13

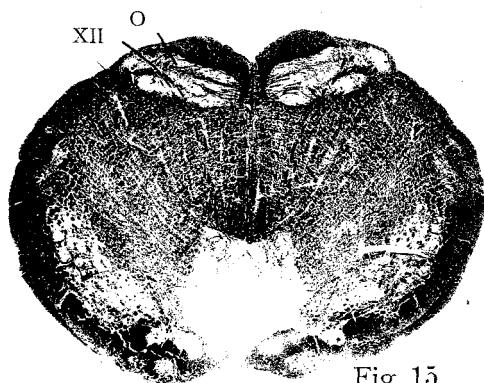


Fig. 15

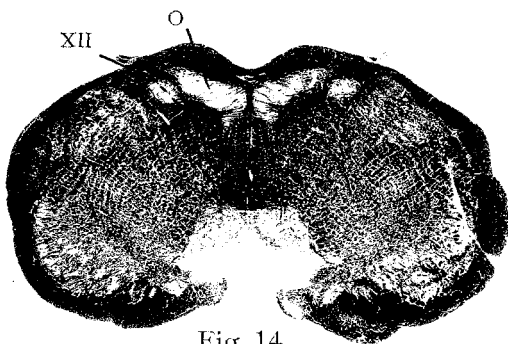


Fig. 14

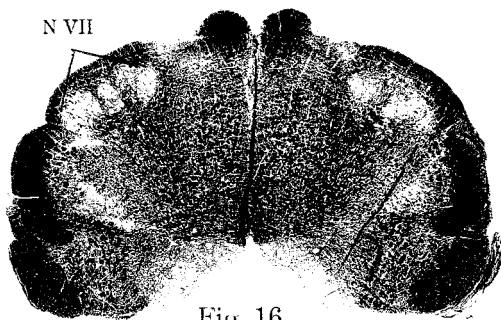


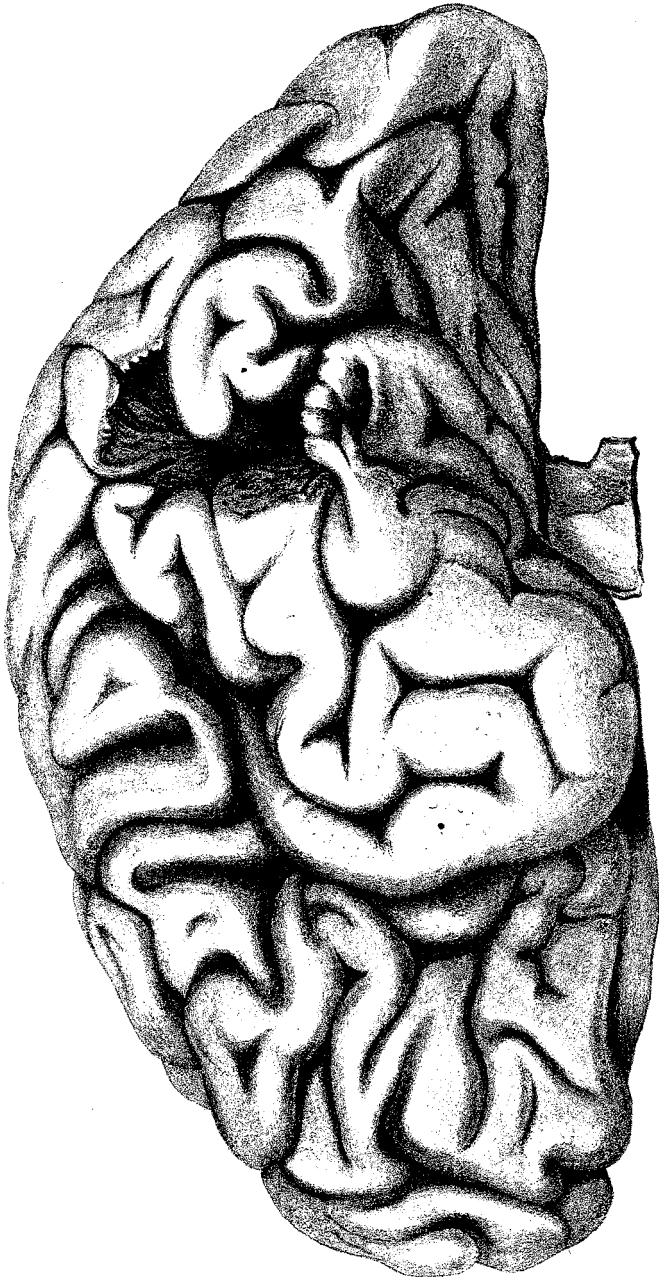
Fig. 16



Fig. 18



Fig. 17



*Fig. 1.*

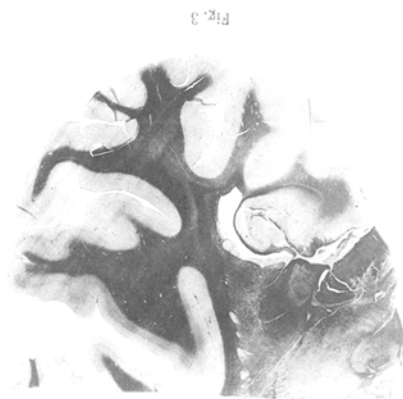


Fig. 3



Fig. 5

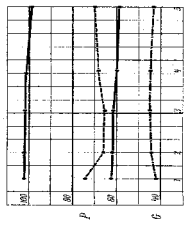


Fig. 9

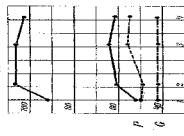


Fig. 4

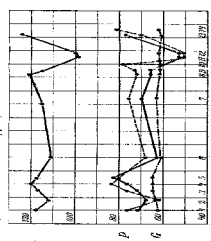
Curve 1  
Group 1/1/1.1



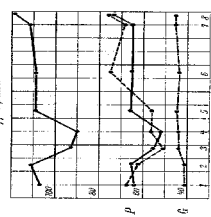
Curve 2  
Group 1/1/1.1



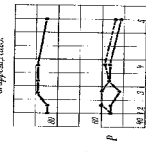
Curve 3  
Group 1/1/1.1



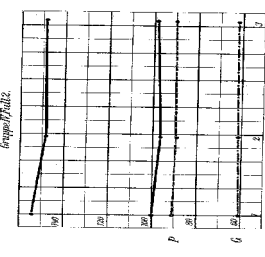
Curve 4  
Group 1/1/1.1



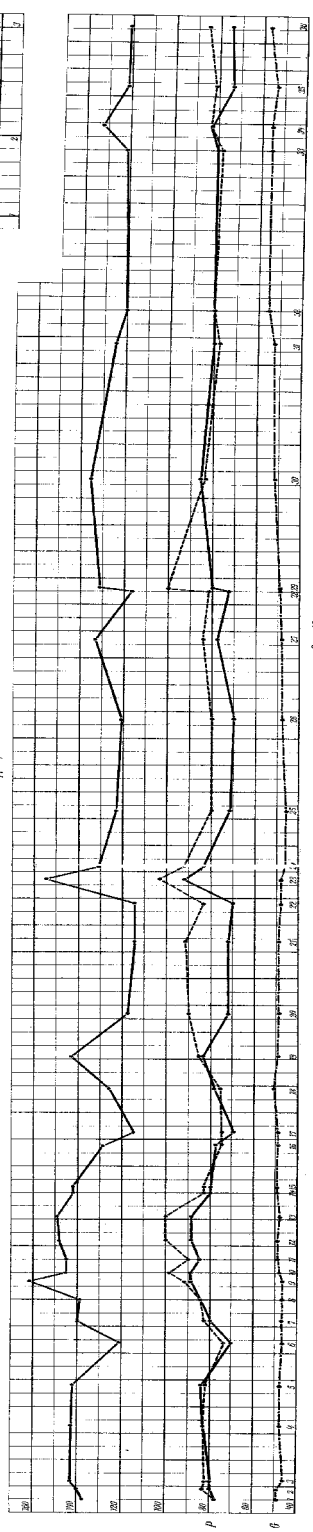
Curve 5  
Group 1/1/1.1



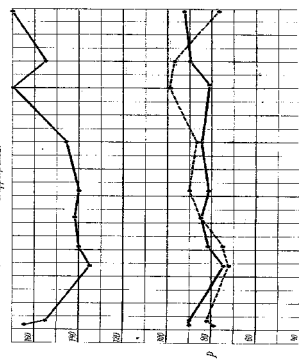
Curve 6  
Group 1/1/1.1



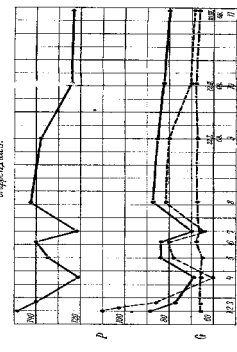
Curve 7  
Group 1/1/1.1



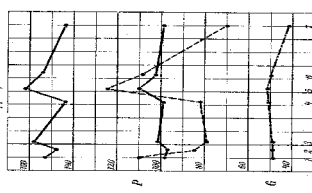
Curve 8  
Group 1/1/1.1



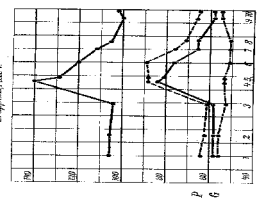
Curve 9  
Group 1/1/1.1



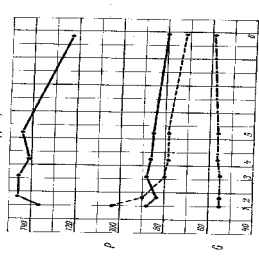
Curve 10  
Group 1/1/1.1



Curve 11  
Group 1/1/1.1

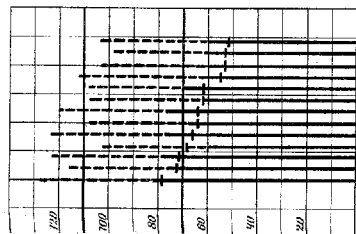


Curve 12  
Group 1/1/1.1

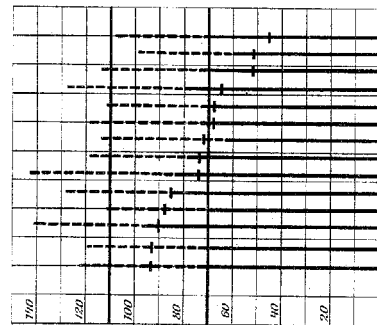




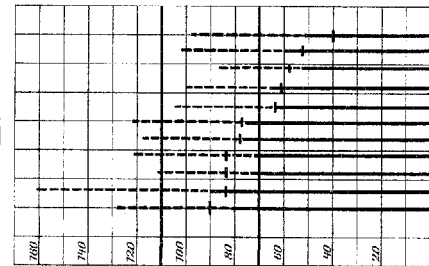
I.



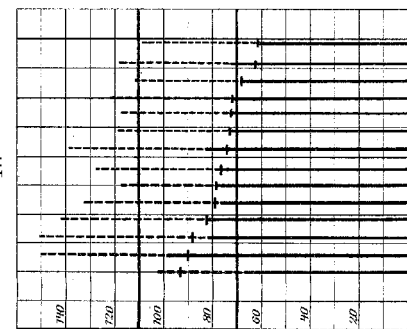
II.



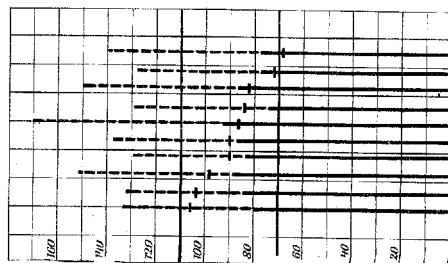
III.



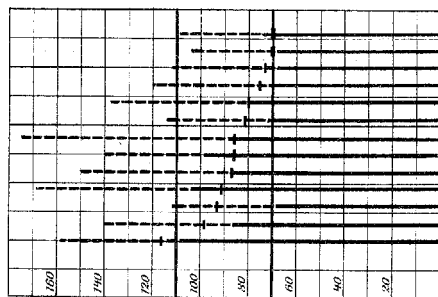
IV.



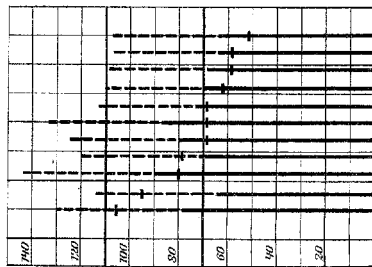
V.



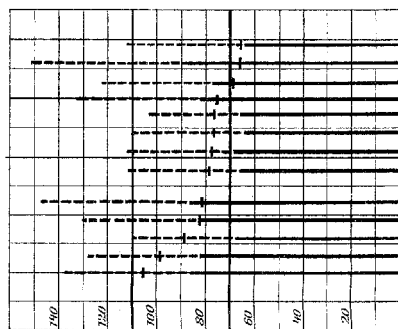
VI.

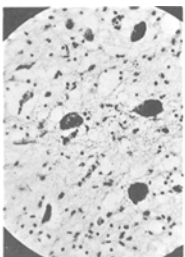


VII.

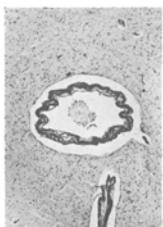


VIII.

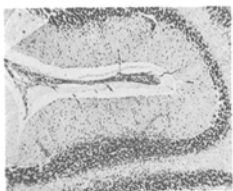




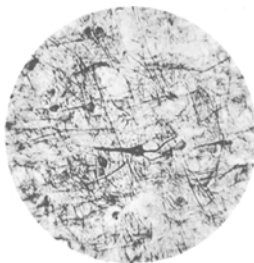
*Fig. 8.*



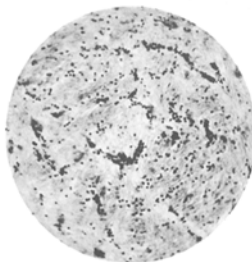
*Fig. 7.*



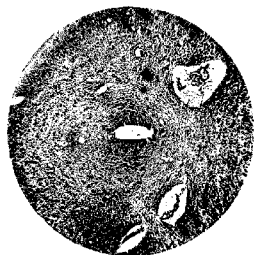
*Fig. 10.*



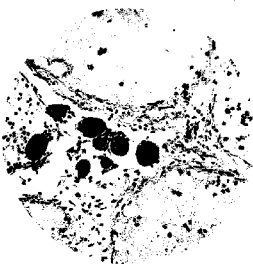
*Fig. 11.*



*Fig. 9.*



*Fig. 2.*



*Fig. 4.*



*Fig. 1.*



*Fig. 3.*



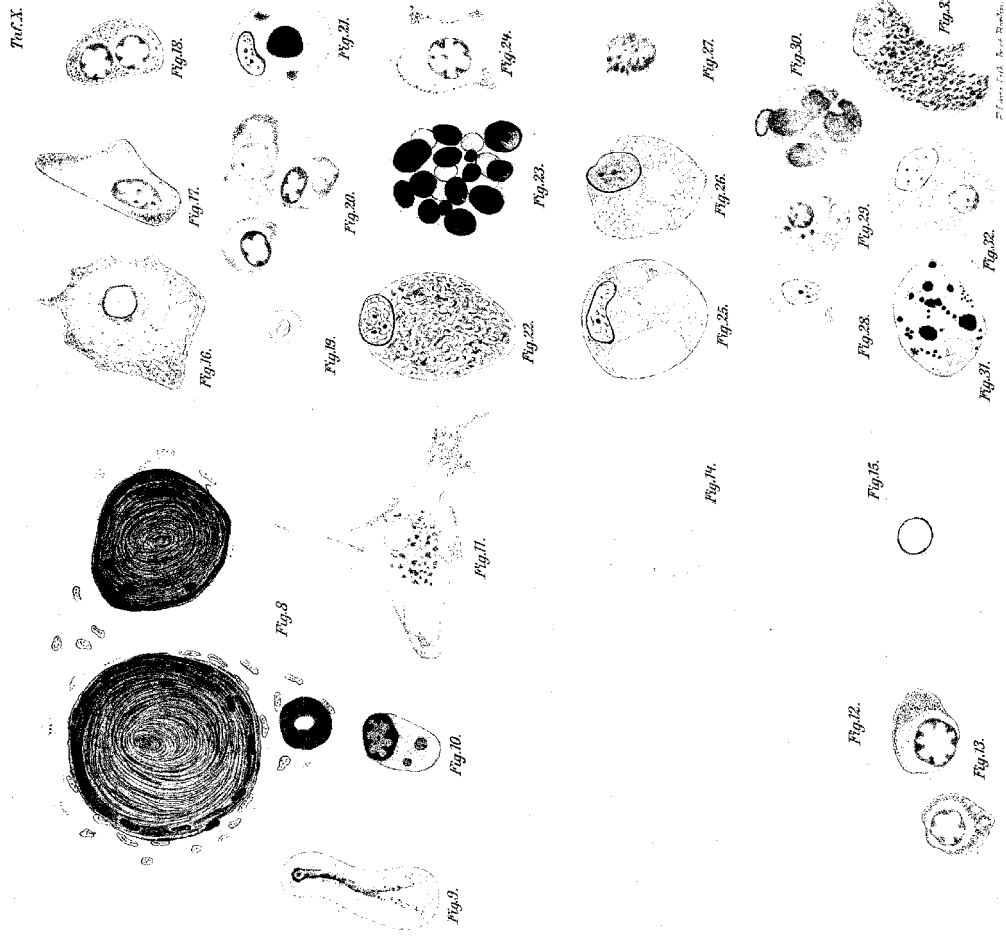




Fig. 1.

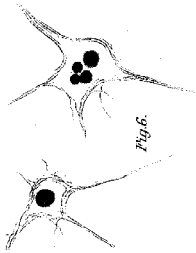


Fig. 6.



Fig. 7.



Fig. 2.

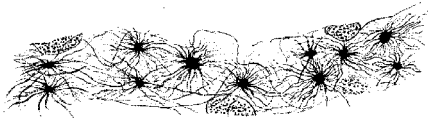


Fig. 3.



Fig. 8.



Fig. 14.



Fig. 10.

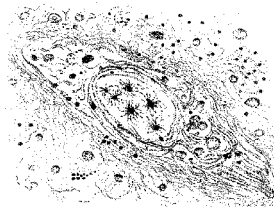


Fig. 15.



Fig. 17.



Fig. 18.

Fig. 16.



Fig. 19.



Fig. 21.



Fig. 13.

Fig. 11.

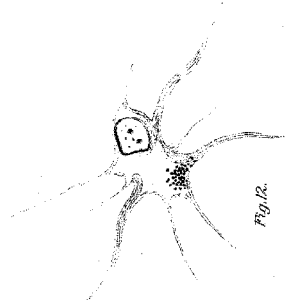


Fig. 12.



Fig. 5.

Fig. 20.



Fig. 22.



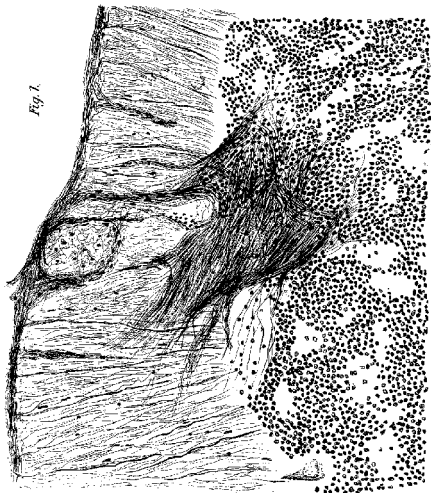


Fig. 1.

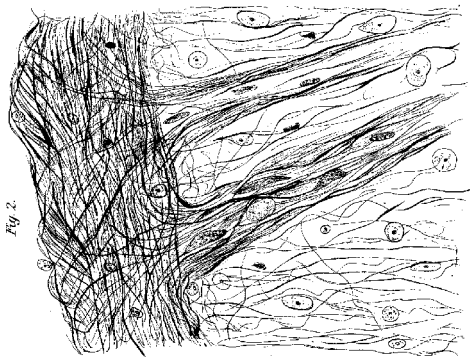


Fig. 2.

Archiv f. Psychiatrie, etc. Bd. XXII.

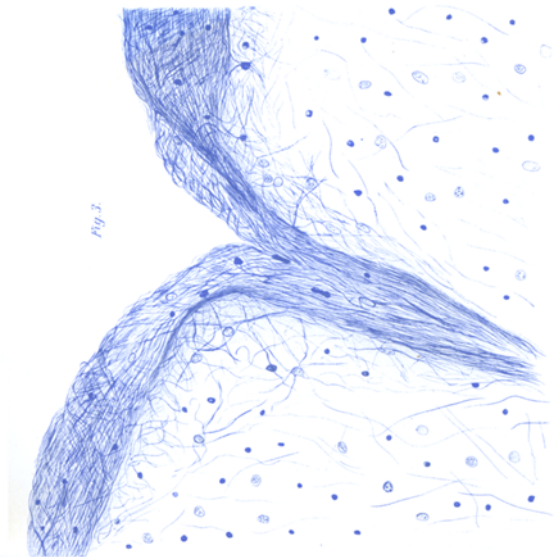


Fig. 3.

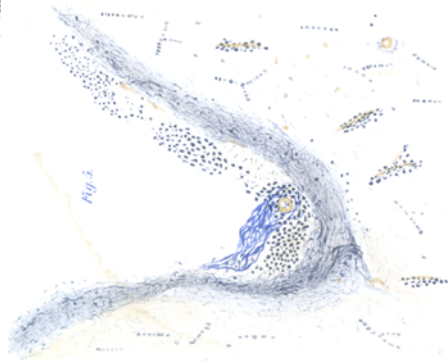


Fig. 4.

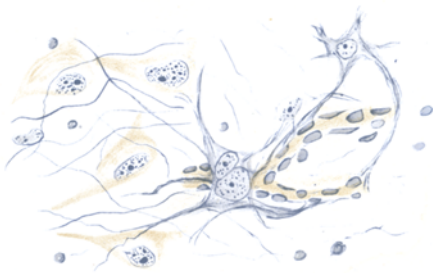
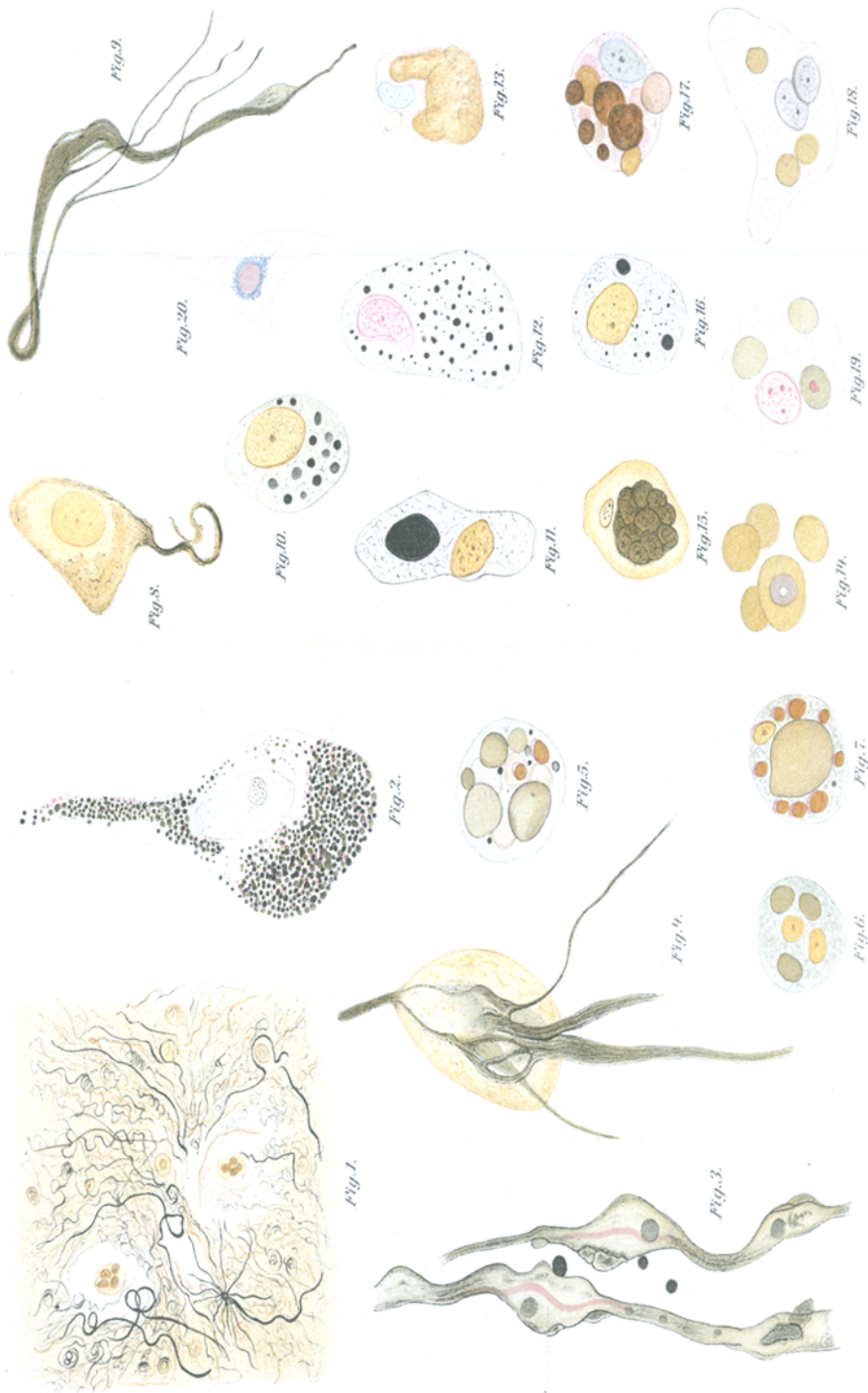
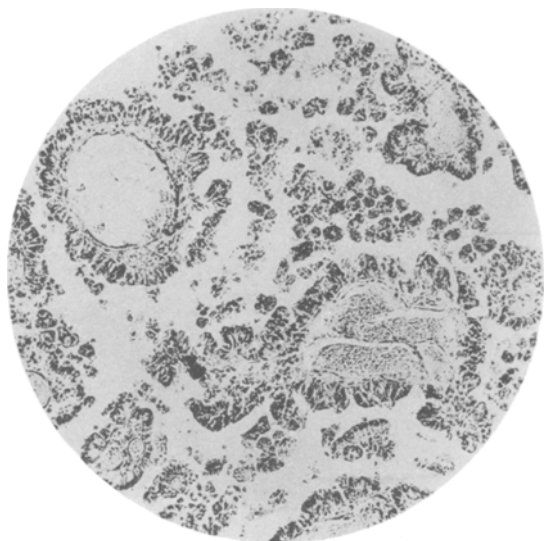


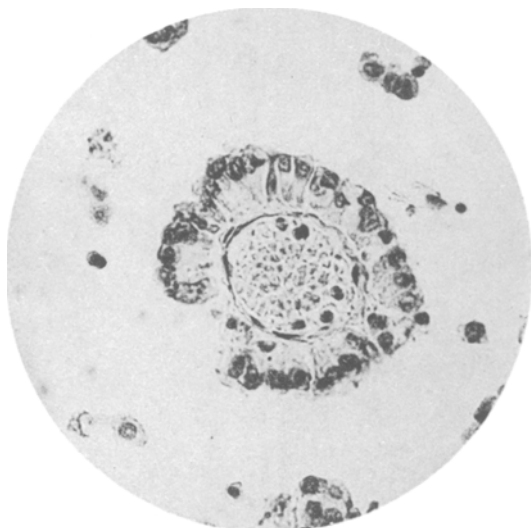
Fig. 5.

Archiv f. Psychiatrie, etc. Bd. XXII.

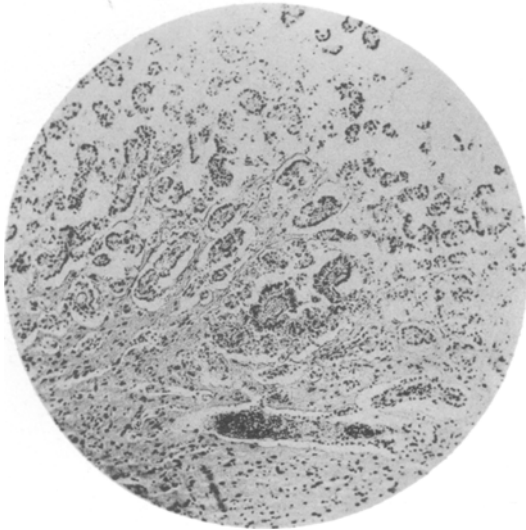




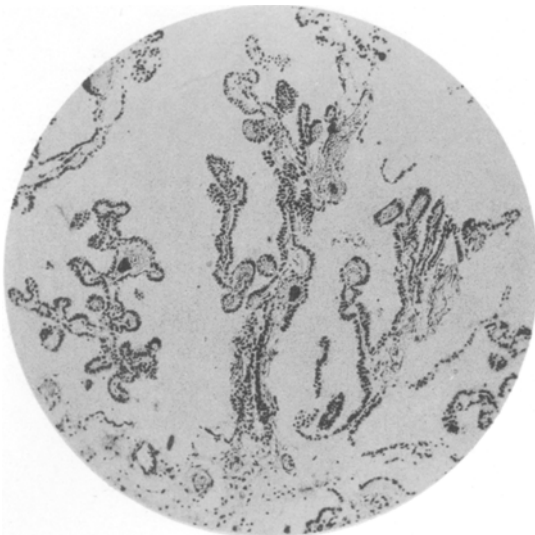
Figur I.



Figur II.



Figur III.



Figur IV.





Fig. 7.

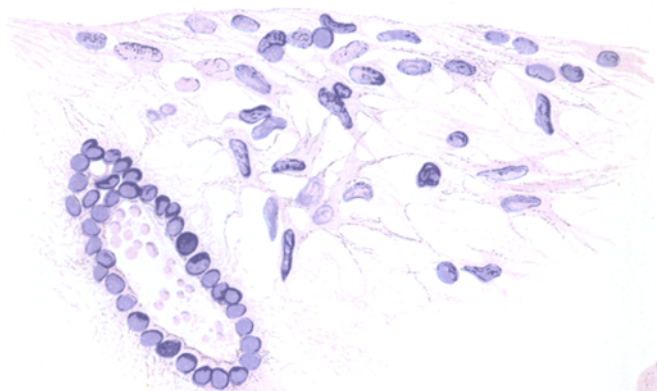


Fig. 5.

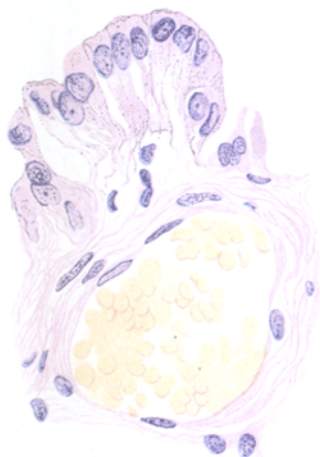
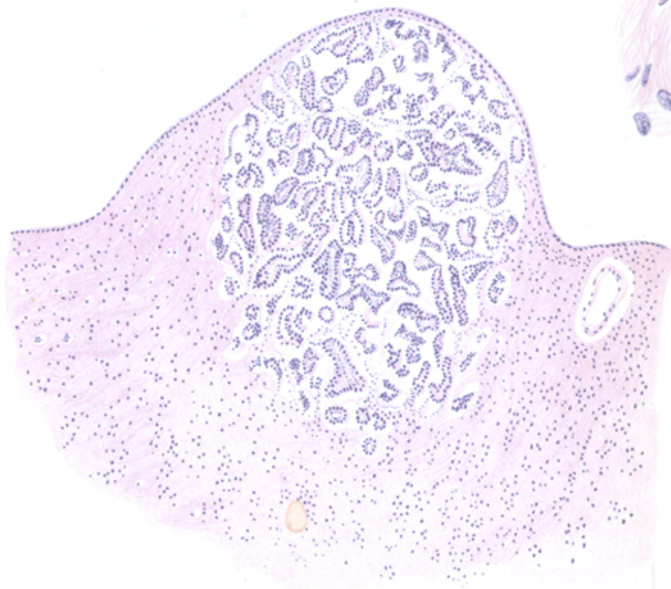


Fig. 6.



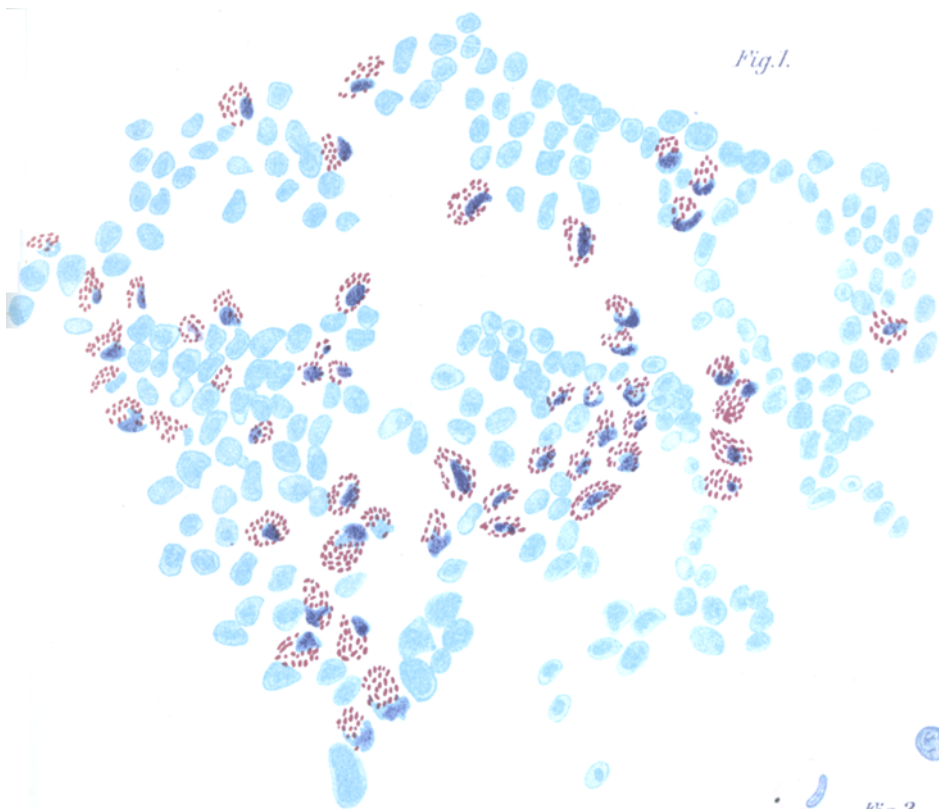


Fig. 1.



Fig. 2.

Fig. 3.

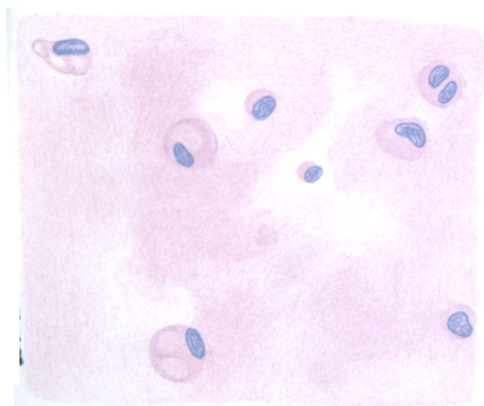
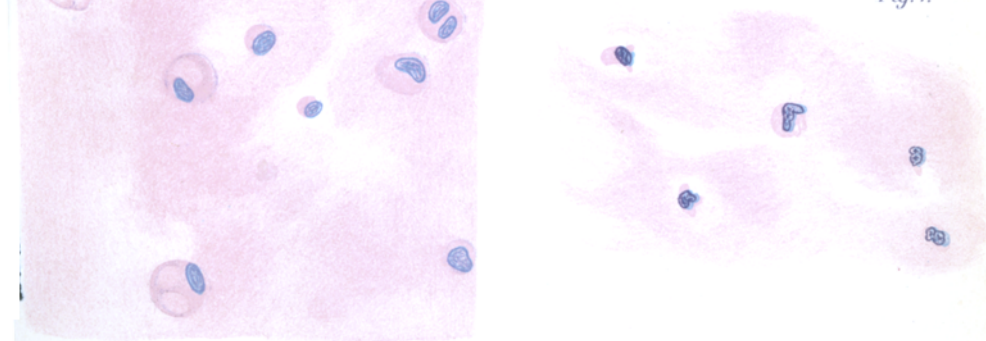
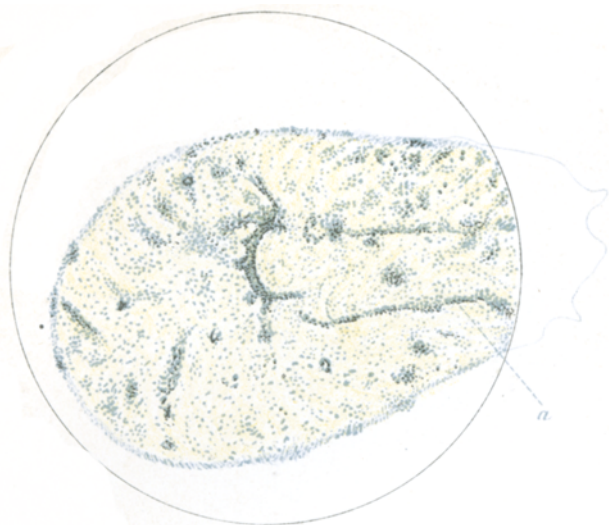
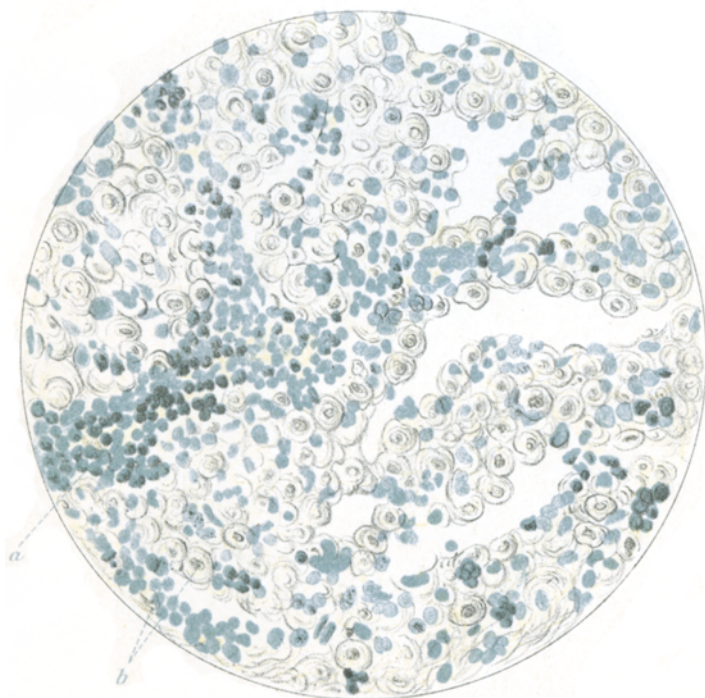


Fig. 4.





*Fig. 1.*



*Fig. 2.*